

ALCO APOT Report

March 2026



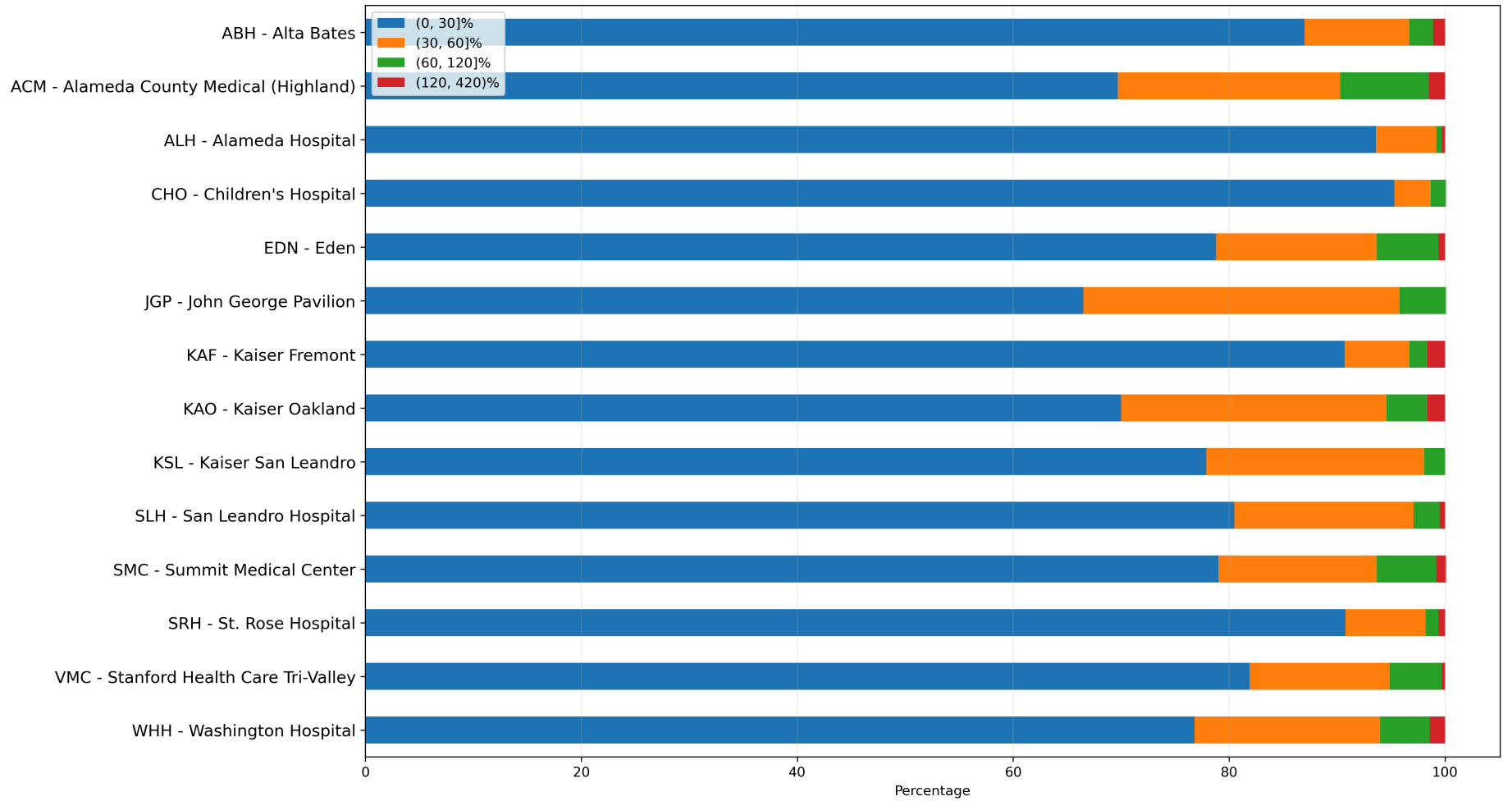
1 - Destinations APOT Statistics

	Transports	Median	Average	90th Percentile	APOTs > 30 min	APOTs > 30 min %
ABH - Alta Bates	647	16.4	22.2	36.9	84	13.0%
ACM - Alameda County Medical (Highland)	1,276	20.2	27.9	59.2	386	30.3%
ALH - Alameda Hospital	392	11.0	14.0	22.3	25	6.4%
CHO - Children's Hospital	148	10.4	13.1	24.6	7	4.7%
EDN - Eden	1,065	15.9	22.8	45.1	226	21.2%
JGP - John George Pavilion	164	22.6	26.5	48.5	55	33.5%
KAF - Kaiser Fremont	515	14.4	19.6	28.3	48	9.3%
KAO - Kaiser Oakland	922	20.4	26.9	48.0	277	30.0%
KSL - Kaiser San Leandro	793	18.9	21.9	38.9	175	22.1%
SLH - San Leandro Hospital	595	18.3	23.0	42.2	116	19.5%
SMC - Summit Medical Center	1,398	16.3	24.0	49.9	294	21.0%
SRH - St. Rose Hospital	498	13.1	17.5	29.2	46	9.2%
VMC - Stanford Health Care Tri-Valley	725	13.7	20.1	43.7	131	18.1%
WHH - Washington Hospital	1,104	17.8	25.3	45.7	256	23.2%

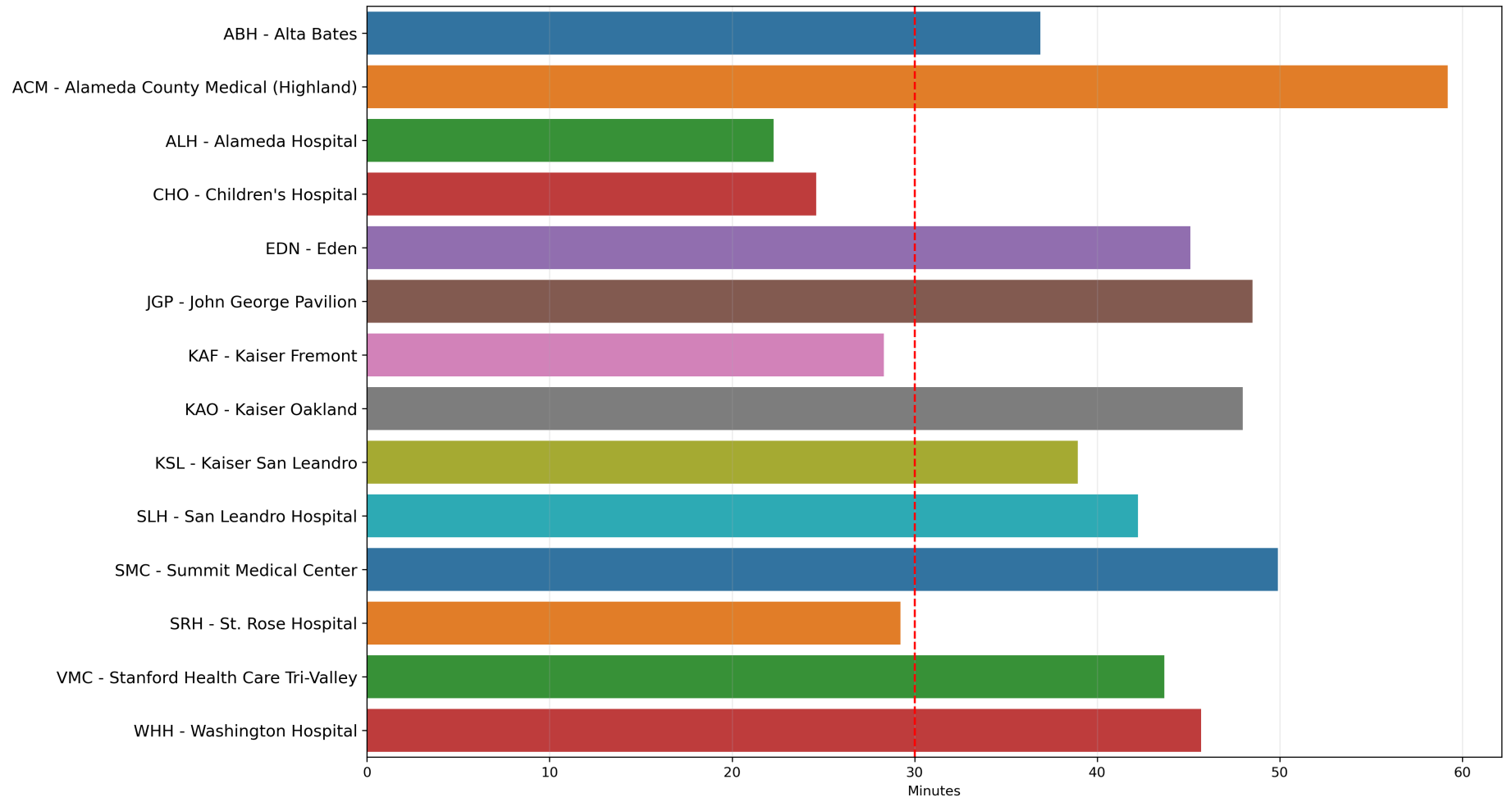
2 - Destinations APOT Bins

	Transports	(0, 30]	(0, 30]%	(30, 60]	(30, 60]%	(60, 120]	(60, 120]%	(120, 420)	(120, 420)%
ABH - Alta Bates	647	563	87.0%	63	9.7%	14	2.2%	7	1.1%
ACM - Alameda County Medical (Highland)	1,276	890	69.7%	263	20.6%	104	8.2%	19	1.5%
ALH - Alameda Hospital	392	367	93.6%	22	5.6%	2	0.5%	1	0.3%
CHO - Children's Hospital	148	141	95.3%	5	3.4%	2	1.4%	0	0.0%
EDN - Eden	1,065	839	78.8%	159	14.9%	61	5.7%	6	0.6%
JGP - John George Pavilion	164	109	66.5%	48	29.3%	7	4.3%	0	0.0%
KAF - Kaiser Fremont	515	467	90.7%	31	6.0%	9	1.7%	8	1.6%
KAO - Kaiser Oakland	922	645	70.0%	227	24.6%	35	3.8%	15	1.6%
KSL - Kaiser San Leandro	793	618	77.9%	160	20.2%	15	1.9%	0	0.0%
SLH - San Leandro Hospital	595	479	80.5%	99	16.6%	14	2.4%	3	0.5%
SMC - Summit Medical Center	1,398	1,104	79.0%	205	14.7%	77	5.5%	12	0.9%
SRH - St. Rose Hospital	498	452	90.8%	37	7.4%	6	1.2%	3	0.6%
VMC - Stanford Health Care Tri-Valley	725	594	81.9%	94	13.0%	35	4.8%	2	0.3%
WHH - Washington Hospital	1,104	848	76.8%	190	17.2%	51	4.6%	15	1.4%

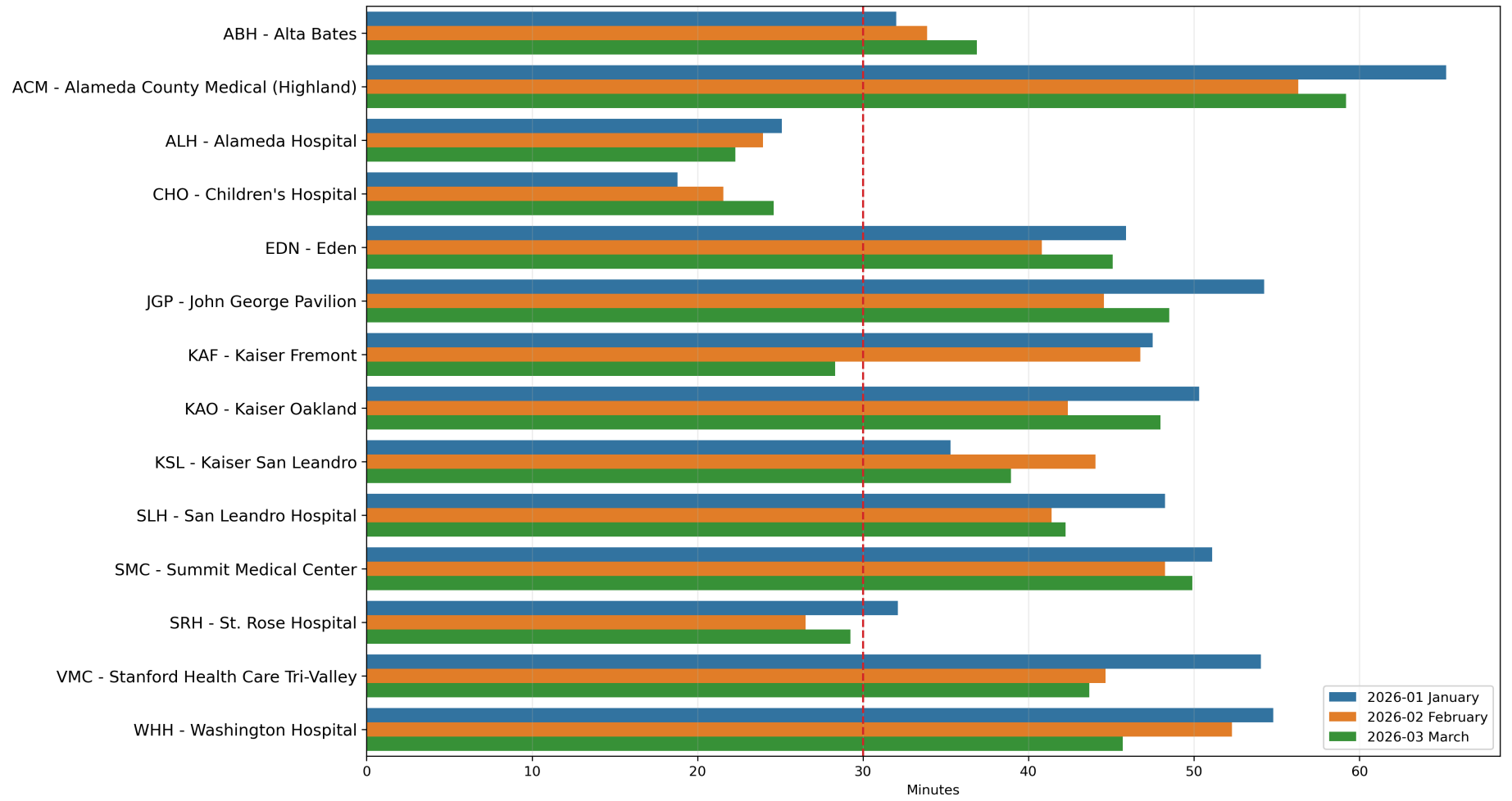
3 - Destinations APOT Stacked Bins



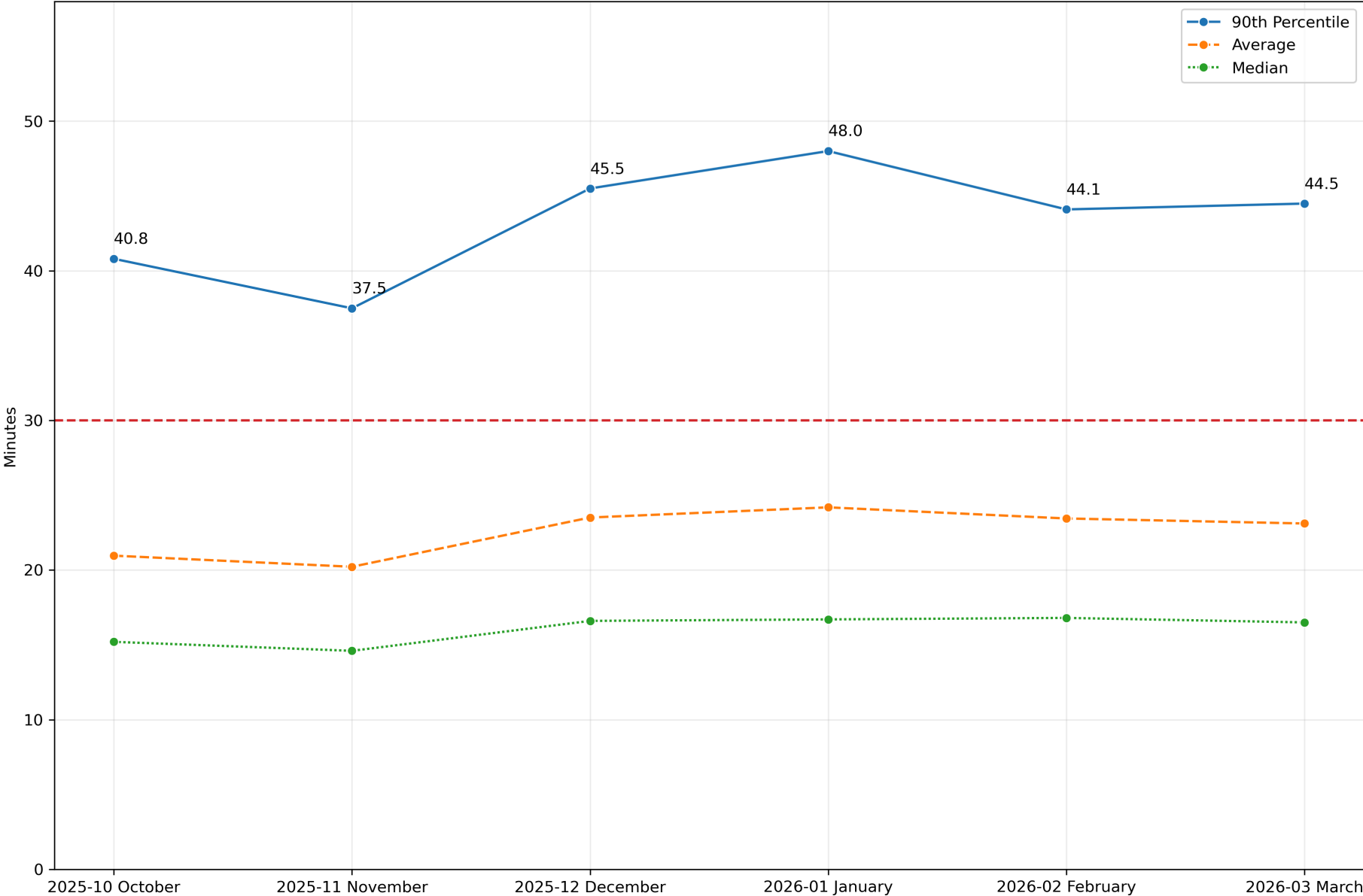
4 - March 2026 APOT by Destination 90th Percentile



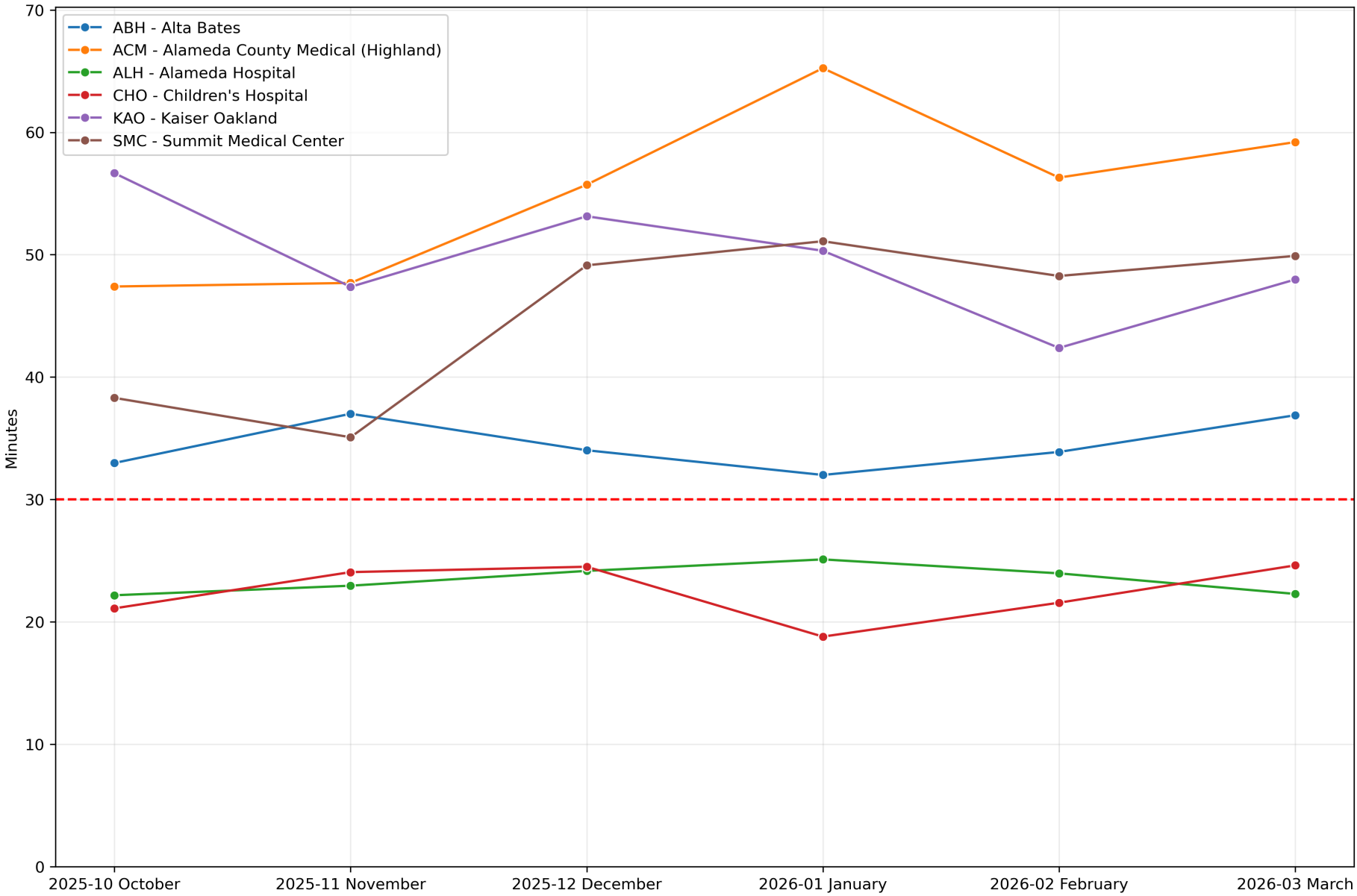
5 - APOTs by Destination 90th Percentile



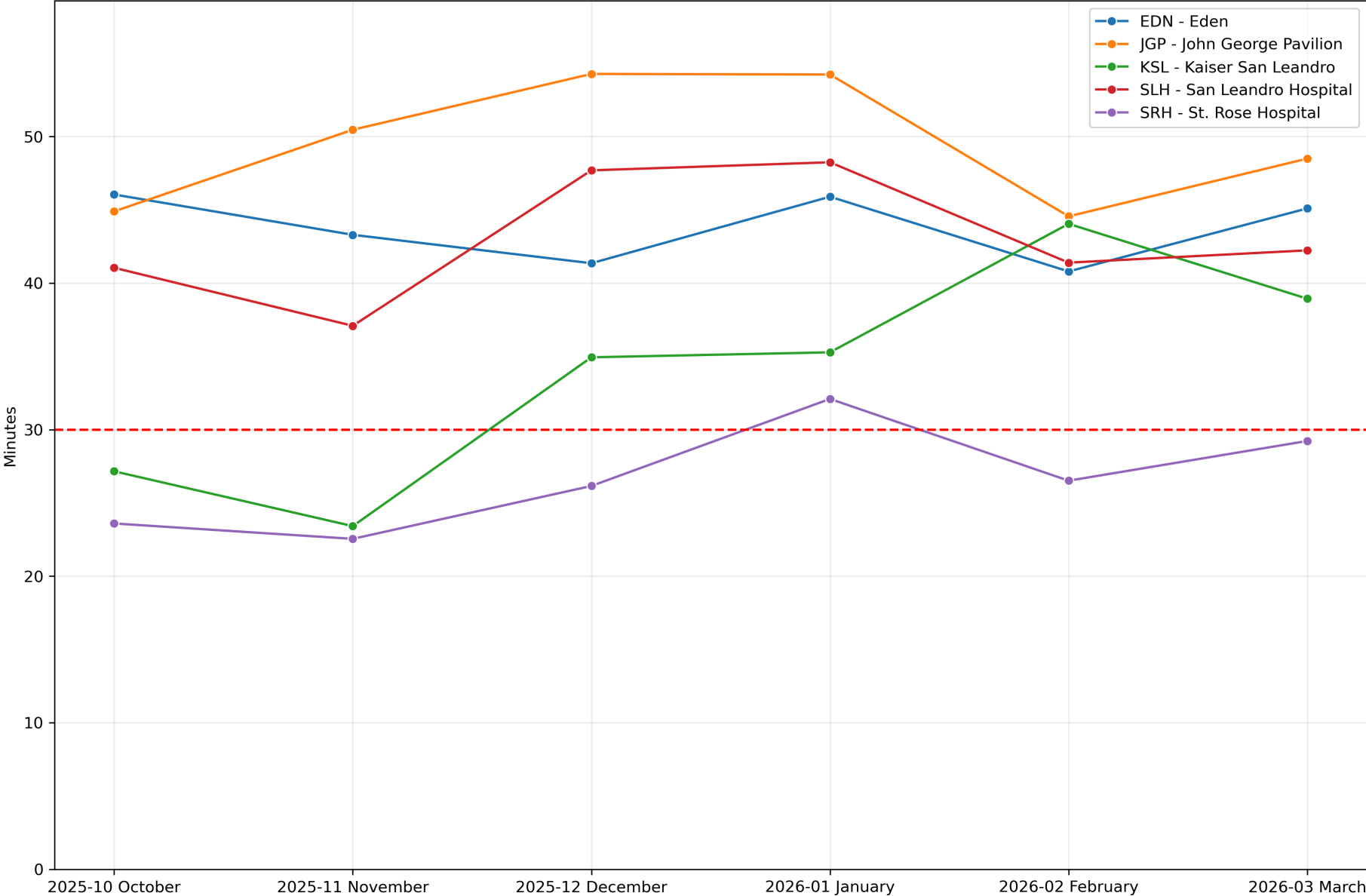
6 - Countywide APOT Statistics



7 - Northern APOTs 90th Percentile



8 - Middle APOTs 90th Percentile



9 - Southern APOTs 90th Percentile

