

Community Provider Advisory Group

April 29, 2026



Alameda County Health

Agenda

- Introductions
- Recap from last meeting
- Objectives
- Review 4/28 Special Board Meeting
- ACOE's Medi-Cal Billing Project
- Breakout Groups
- Group Debrief
- Public Comment
- Closing

Introductions

Name, Organization

share a recent bright spot!

Recap From Last Meeting (2/4/26)

- Panel 1: County directors discussion of top priorities within changing landscape
- Panel 2: Providers gave overviews of upcoming challenges with expected funding reductions

HR 1 Impacts on Clients	BHSA & HR1 and Associated Funding Reductions
Expecting large amount of disenrollments	Medi-Cal billing infrastructure threatened
CalAIM successes threatened	Staff layoffs
Targeted outreach and enrollment support needed	Closure of service locations

Today's Meeting Objectives

- Understand recent developments related to Measure W and BHSA funding
- Connect with colleagues on sustainability planning

Stabilize the Safety Net \$20.0M/year available

Time-limited bridge + essential ongoing

Requests	FY 26/27	FY 27/28
CBOs to develop workfare slots SSA	\$0.5M	\$0.5M
Extend CBO Immigration Contracts SSA	\$1.3M	\$0
HealthPAC network stabilization & Prop 1 mitigation for HPAC <i>AC Health—existing and new contracts July 1, 2026</i>	\$3.0M	\$15.5M
Medi-Cal & Health Promotion Comms <i>AC Health—Oct. ECSF allocation contract through Dec 2027</i>	\$0	\$0.8M
Prop 1/BHSA Transition Mitigation <i>AC Health—planning for July 1, 2026 transition</i>	\$15.2M	\$0
LGBTQ+ Community Supports <i>AC Health—Oct. ECSF allocation 1-yr contract to BOS in May 2026</i>	\$0	\$1.8M
Medi-Cal retention strategies <i>AC Health—Oct. ECSF allocation 1-yr contract approved April 2026</i>	\$0	\$1.5M
Total	\$20.0M	\$20.0M

Multi-Payer School Linked Fee Schedule Removing Barriers To Behavioral Health Services



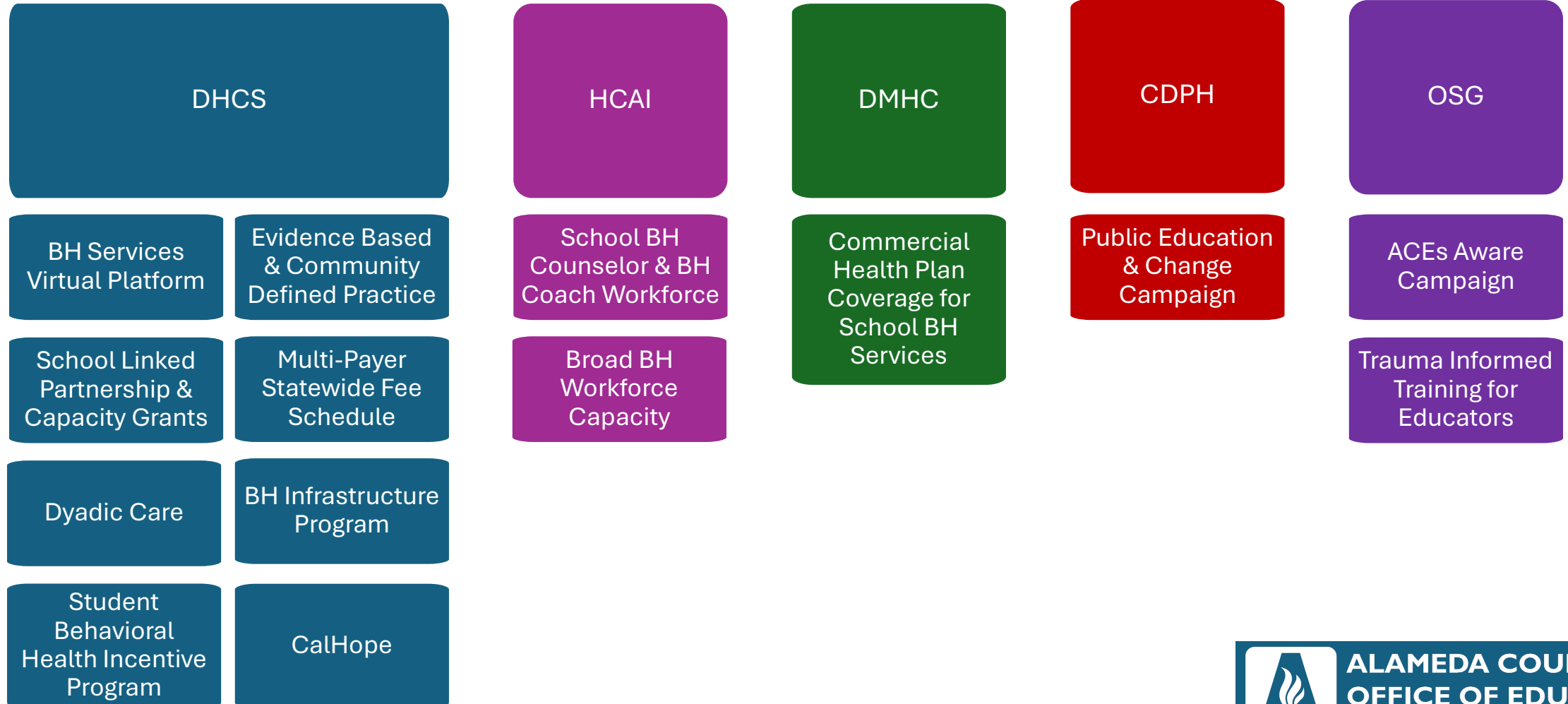
Children and Youth Behavioral Health Initiative (CYBHI) Overview

- Established in 2021, the CYBHI is a \$4.7 billion investment of State General Fund that works to reimagine a more integrated, youth-centered system where young people can find support for mental health and substance use needs where, when, and in the way they need it most.
- The CYBHI is a multi-year, initiative led by five departments, including DHCS, within the California Health and Human Services (CalHHS) Agency.
- Visit dhcs.ca.gov/cybhi or cybhi.chhs.ca.gov for more info.



CYBHI Work Streams

State Leading Agency



A broader delivery system supporting coverage for students across California

- **Contracts** with managed care plans (MCPs), county behavioral health, or commercial or self-insured plans **for additional behavioral health services beyond the scope of the fee schedule** (e.g., Enhanced Care Management, Specialty Mental Health Services)
- **Statewide multi-payer fee schedule for reimbursement of school-linked behavioral health services from (as applicable):**
 - Commercial plans, **for all included services**
 - Medi-Cal MCPs, **for included mental health services**
 - Medi-Cal County BH Plans, **for included SUD services**
 - (Future State)
- **Individuals with Disabilities Education Act (IDEA)** funding for students with special needs, including Educationally-Related Mental Health Services (ERMHS)
- **LEA-BOP funding** for approved health-related services provided by qualified health service practitioners to Medi-Cal eligible students
- **Other existing education funding** for mental health - Community Schools, Multi-Tiered System Support (MTSS), Positive Behavior Intervention and Supports (PBIS), etc.
- List is not exhaustive and illustrative



Multi Payer School Linked Fee Schedule VISION (January 2024)

- Create a sustainable funding source for school provided or school linked behavioral health services for those ages 0-25 that:
 - Increases access to school-linked behavioral health services for children and youth (Including those in general education and special education programs)
 - Creates a more approachable reimbursement model for behavioral health services in schools
 - Does not require diagnosis of students
 - Works for students in general education or special education regardless to if they have Medi-Cal, Commercial or Disability Insurance
 - Provides unrestricted funding to LEAs and Partner Agencies



Services Included in the Fee Schedule

Service	Details
Psychoeducation	Behavioral health prevention by a peer Family-based behavioral health education Health Education by Wellness Coach Wellness Education and Skill Building Skill Training and Development for substance use disorders
Screenings and Assessments	Ex: Psychological testing, alcohol and/or substance use Screenings for anxiety, depression Structural screens and brief interventions
Therapy	Dyadic family training and counseling for child development Family psychotherapy Psychotherapy (individual, group, crisis)
Peer Counseling	Self-help/ Peer Services
Care Coordination	Case consultations with teacher Medication Management

Who can provide services:

PPS - Social Workers, Counselors, Psychologists

Licensed - Clinical Social Workers, Marriage & Family Therapists

Clinical Interns - AMFT, ACSW

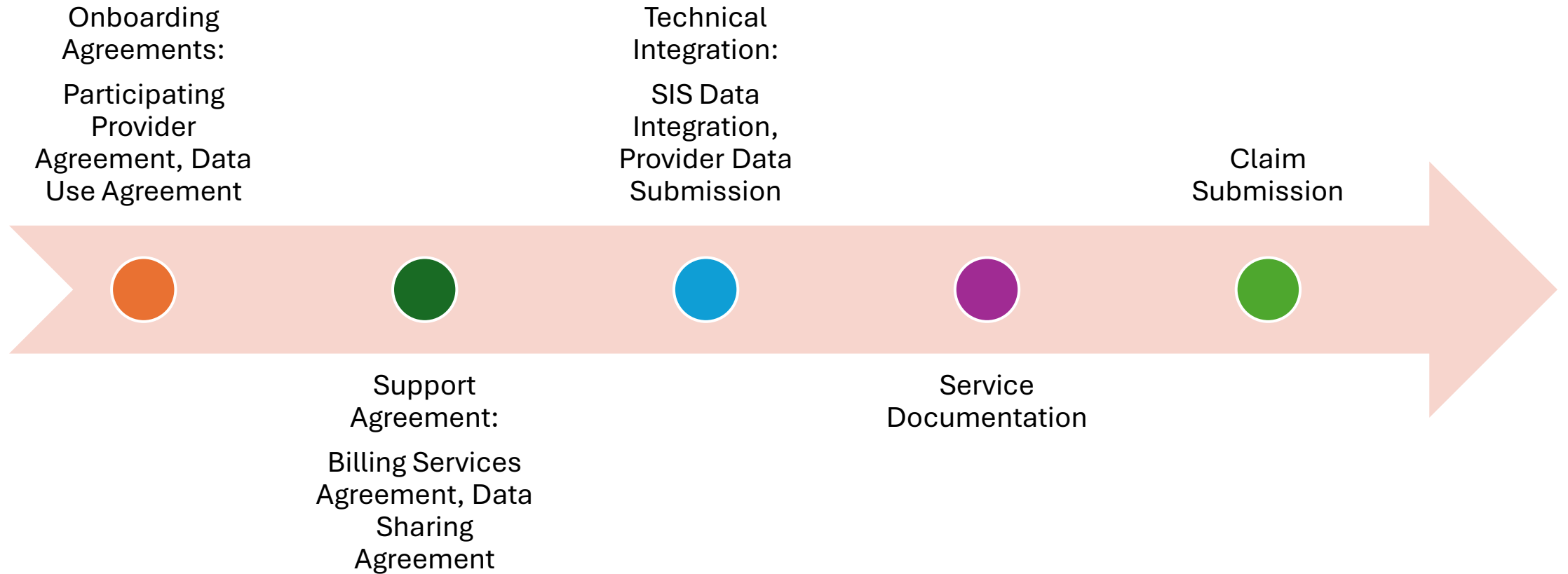
Nurses

Community Health Works & Wellness Coaches

ACOE Medical Billing Approach Removing Barriers To Behavioral Health Services



Timeline



ACOE Medical Billing Team



Ash Pandey

Director
School Health Medical Billing



Charlea Scott

School Health Provider
Network Manager



Cherilyn Aranzamendez

Billing Manager
Medical Billing



Mina Kwan

Health IT
Applications Administrator



Ranjana Prasad

Billing Specialist
Medical Billing



Helen Park

Billing Specialist
Medical Billing



Dina Sebastian

School Health Medical Biller
Medical Billing



Michelle Gee

Program Manager
School Social Work Supports



Veera

Kalyanasundaram

Data Warehouse
Administrator



Su Su Min Naing

School Health Medical Biller
Medical Billing



Anika

Bugarin-Jebejian

Project Specialist
Student Services

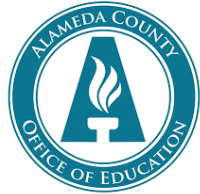


Lauren Bell

Program Manager
School Counselor Support



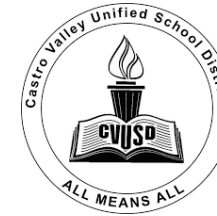
Alameda County LEAs in Billing Agreements with ACOE



ACOE Schools



Berkeley Unified School District



Castro Valley Unified School District



Dublin Unified School District



Fremont Unified School District



Hayward Unified School Districts



Livermore Valley Joint Unified School District



Piedmont Unified School District



Pleasanton Unified School District



Newark Unified School District



Charter- Arise High School



Charter- Hayward Twin Oaks

Status of LEAs: LEAs That are “Live” in ACOE’s Student Health Record System (SHRS) & Data Warehouse Data as of April 27

LEA	LEA Providers Submitting Services in SHRS	Total Services Submitted	Notes
ACOE Schools	6	1,179	18 total providers, phased onboarding
Fremont USD	20	2,081	87 total providers, phased onboarding
Pleasanton USD	33	2,750	43 total providers, phased onboarding
Castro Valley USD	20	2,802	21 total providers
Berkeley USD	13	0	Went “Live” on April 20

LEAs That are Not Yet “Live” in ACOE’s Student Health Record System (SHRS) & Data Warehouse

LEA	Status (As of April 27)
Livermore Valley Joint USD	<ul style="list-style-type: none"> ● Provider SHRS Training on May 6 ● Will “Go Live” once data verification complete, likely by end of May pending no data issues
Piedmont USD	<ul style="list-style-type: none"> ● Data validation phase, “Go Live” TBD
Hayward USD	<ul style="list-style-type: none"> ● Data validation phase, “Go Live” TBD
Newark USD	<ul style="list-style-type: none"> ● Data validation phase, “Go Live” TBD
Dublin USD	<ul style="list-style-type: none"> ● Data validation phase, “Go Live” TBD
Arise HS (charter)	<ul style="list-style-type: none"> ● Data validation completed, “Go Live” TBD
Hayward Twin Oaks Montessori (charter)	<ul style="list-style-type: none"> ● Data validation phase, “Go Live” TBD

Networks & Trainings

- Networks
 - Billing Coordinators
 - Providers
 - Community Based Organizations
- Trainings
 - SHRs
 - CANS
 - Care Planning
- Office Hours
 - Consultancy



Learning Sessions for Community-Based Organizations

- Sessions are co-hosted by Alameda County Office of Education and Alameda County Health, Healthy Schools and Communities, with support from WestEd.
- Goal is to increase understanding about the CYBHI Fee Schedule for community-based partners and organizations and support CBOs, in coordination with their LEA partners, in implementing and accessing the CYBHI Fee Schedule.



Community Partners Network Learning Sessions

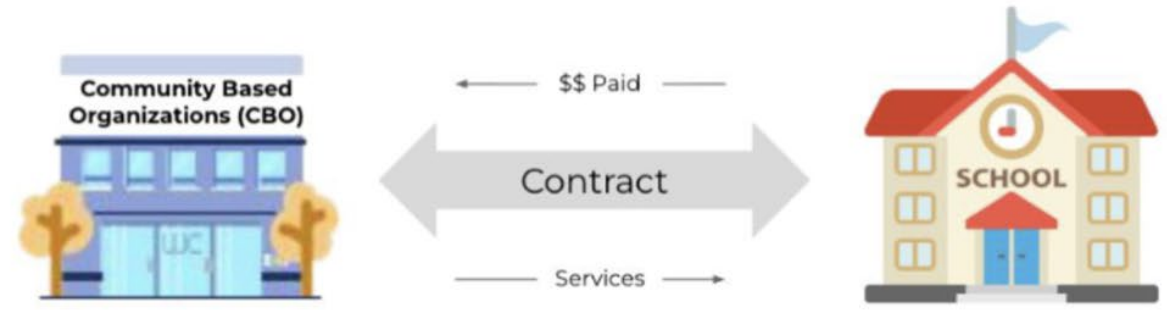
- Session 1: Overview of the CYBHI Fee Schedule
 - November 18, 2025
- Session 2: Implementation Steps for CBOs and Partners
 - January 27, 2026
- Session 3: Contracts and MOUs Aligned with the Fee Schedule
 - March 19, 2026
- Session 4: Documentation and Billing Best Practices for CBOs
 - May 27, 2026



CYBHI Fee Schedule Provider Pathways

1. Embedded Providers

CBOs with a contracted, financial relationship with an LEA



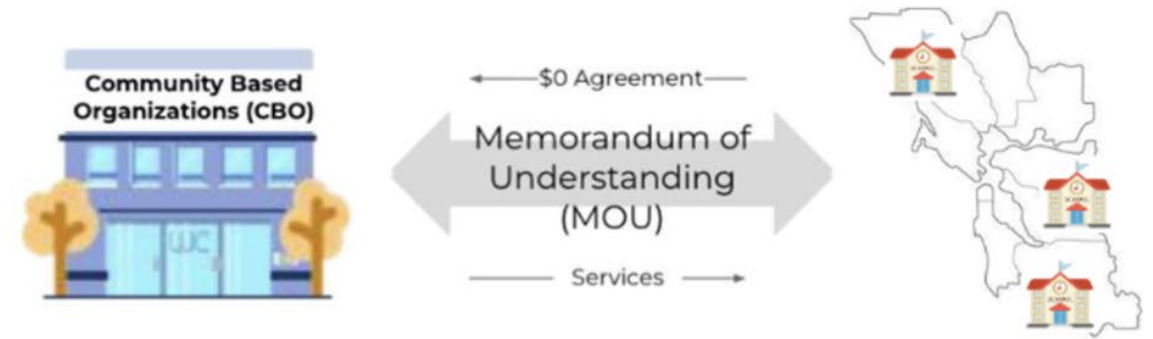
2. Affiliated Provider

CBOs without a financial relationship with an LEA



3. Statewide Affiliated Providers

CBOs that serve multiple LEAs across 2 or more counties, no financial relationship



Where To Go For Support

Topic	Where to Go for Support
General information about CYBHI Fee Schedule	Ash Pandey, ACOE, email: apandey@acoe.org CYBHI Multi-Payer Fee Schedule FAQ DHCS Fee Schedule website
NPI and/or Medi-Cal FFS Enrollment	Charlea Scott, ACOE Email: cscott@acoe.org or Book a TA meeting
CYBHI Learning Sessions Schedule, Dates & Materials	Sign up for the Community Partner Network
Community Partners Network (CPN) Learning Sessions	Dr. Rachel Cobb, ACOE, email: rcobb@acoe.org
CBO/LEA Agreements & MOUs	Ash Pandey, ACOE, email: apandey@acoe.org
Technical System Set-Up (e.g., provider rosters, EHR, Carelon)	For CBOs serving ACOE-partnered LEAs: Charlea Scott, ACOE, email: cscott@acoe.org For CBOs serving LEAs not partnered with ACOE: Lisa Eisenberg, WestEd, email: leisenb@wested.org

Next Steps & Closing

- Meeting materials will be sent out and posted on <https://health.alamedacountyca.gov/community-provider-advisory-group/>
- 2026 In-Person CPAG Meetings
 - Wednesday, June 3, 2026 | 10-12:30pm | *Location: San Leandro*
 - Wednesday, October 21, 2026 | 10am-12:30pm | *Location: Oakland TEC*

Access to Reproductive Health Care Survey

- AC Health survey to understand **factors that influence access to prenatal and reproductive health care**, including barriers, concerns, and supports that affect individuals' ability to seek and receive care
- Audience: Community Members and Providers

English Survey

<https://www.surveymonkey.com/r/YNCJNXL>



Spanish Survey

<https://www.surveymonkey.com/r/YNCJNXL?lang=es>

